

COUNTY OF SUFFOLK

KARA HAHN

MAJORITY LEADER
LEGISLATOR, FIFTH DISTRICT

COMMITTEE CHAIR

ENVIRONMENT, PLANNING
& AGRICULTURE
PARKS & RECREATION



MEMBER

ECONOMIC DEVELOPMENT
EDUCATION & INFORMATION
TECHNOLOGY
GOVERNMENT OPERATIONS,
PERSONNEL & HOUSING
PUBLIC SAFETY

COUNTY LEGISLATURE

TO: Members of the Environment, Planning & Agriculture Committee:

Honorable Al Krupski, Vice-Chair
Honorable Sarah Anker
Honorable Bridget Fleming
Honorable Tom Muratore
Honorable Robert Trotta
All interested parties

FROM: Honorable Kara Hahn, Chair

DATE: March 16, 2017

RE: Revised - Environment, Planning & Agriculture Committee Agenda

Please be advised that the next meeting of the Environment, Planning & Agriculture Committee will be held on **Monday, March 20, 2017 at 10:00 a.m.** in the Rose Y. Caracappa Auditorium of the William H. Rogers Legislature Building, 725 Veterans Memorial Highway, Hauppauge, New York.

I. PLEDGE OF ALLEGIANCE

II. CORRESPONDENCE

III. PUBLIC PORTION

IV. PRESENTATIONS:

NONE

V. TABLED RESOLUTIONS:

[1003.](#) Authorizing appraisal of land under the Suffolk County Drinking Water Protection Program, as amended by Local Law No. 24-2007, North Fork United Methodist Church – Town of Southold (SCTM No. 1000-025.00-02.00-023.002). (Krupski)

[1025.](#) Adopting Local Law No. -2017, A Local Law to ensure continuity of farmland preservation and agricultural production in Suffolk County. (Co. Exec.)

[1118.](#) Adopting Local Law No. -2017, A Local Law to increase the penalties for illegal dumping in Suffolk County. (Hahn)

VI. INTRODUCTORY RESOLUTIONS:

[1165.](#) Authorizing the acquisition of land under the New Suffolk County Drinking Water Protection Program (effective December 1, 2007) – open space component - for the John G. and Roberta Marinuzzi property – Hampton Hills County Park addition/Pine Barrens Core - Town of Southampton - (SCTM No. 0900-241.00-01.00-001.000). (Co. Exec.)

[1182.](#) Making a SEQRA determination in connection with the proposed Port Jefferson – Wading River Rails to Trails Pedestrian and Bicycle Path, (CP 5903), Town of Brookhaven, Town of Riverhead and Village of Shoreham. (Pres. Off.)

[1183.](#) Making a SEQRA determination in connection with the proposed Improvements to Suffolk County Sewer District No. 7 – Medford, (CP 8194), Town of Brookhaven. (Pres. Off.)

[1184.](#) Making a SEQRA determination in connection with the proposed Suffolk County Sewer District No. 22 - Hauppauge Municipal Recharge Facilities Project, (CP 8171), Town of Smithtown. (Pres. Off.)

[1189.](#) Approving and authorizing a contract for a Crowdsourced Community Engagement Plan. (Co. Exec.)

[1191.](#) Adopting the Final Scope for the Draft Generic Environmental Impact Statement in connection with the Suffolk County Subwatersheds Wastewater Management Plan (“The Suffolk County Wastewater Management Program for the reduction of nitrogen loading from wastewater sources”). (Pres. Off.)

VII. EXECUTIVE SESSION

To review appraisals of proposed acquisitions pursuant to the requirements of the “Triple A” program.

VIII. ADJOURNMENT

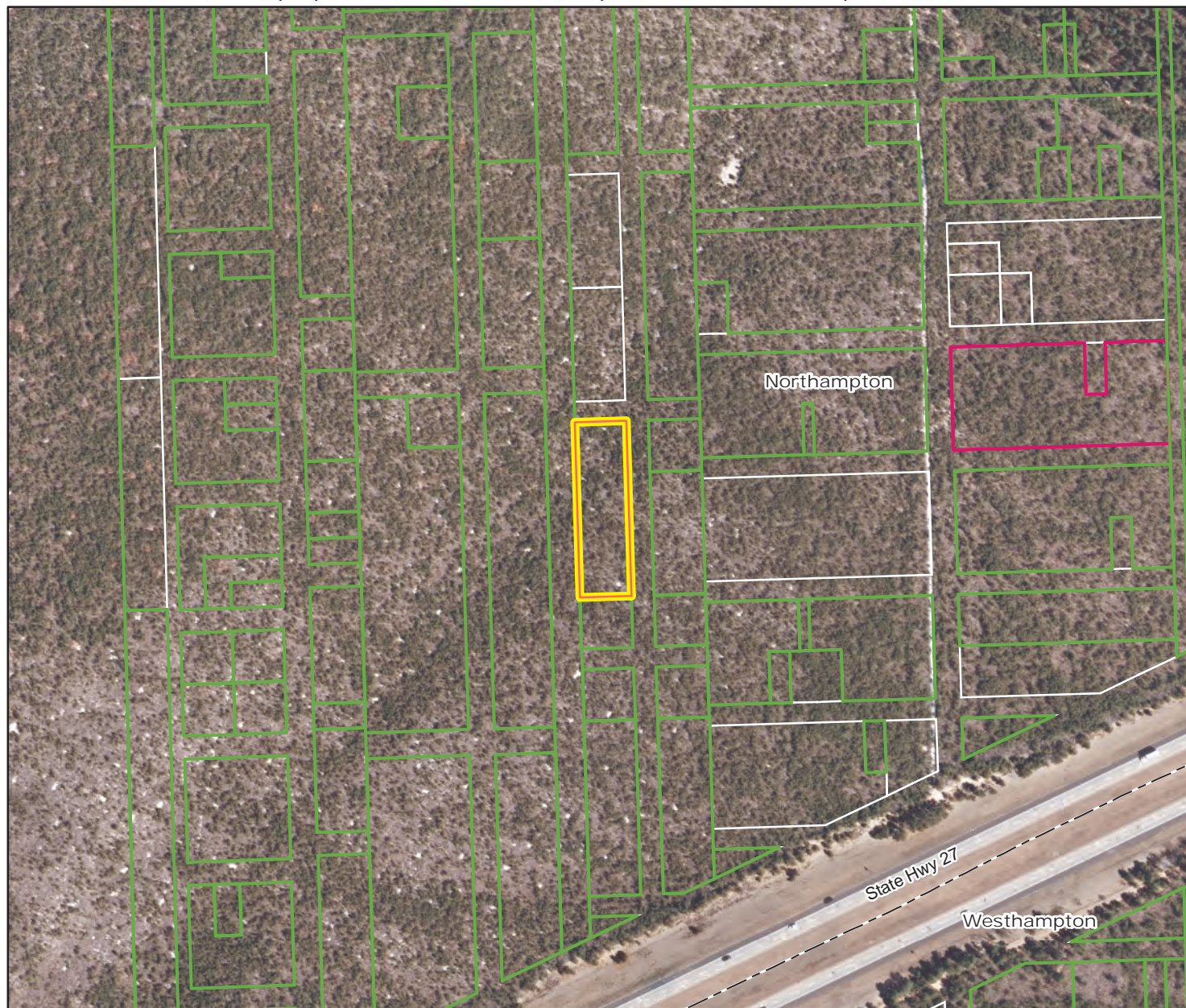
EPA Committee Meeting March 20, 2017




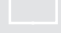
<u>L.R. #</u>	<u>Type of Action</u>	<u>Property Name</u>	<u>Tax Map #(s)</u>
IR 1165-2017	Acquisition - Open Space	Hampton Hills Co. Park Add. Marinuzzi Property – Pine Barrens CORE Area	0900-241.00-01.00-001.000

**HAMPTON HILLS ADDITION (PINE BARRENS CORE) -
JOHN G. AND ROBERTA MARINUZZI PROPERTY**

SCRPTM#: 0900 21400 0100 001000

The New Suffolk County Drinking Water Protection Program (Effective December 1, 2007) - Open Space Component
0.78 ± acres proposed - Hamlet of Northampton, Town of Southampton IR 1165-2017



-  Proposed Acquisition
-  County of Suffolk
-  Town of Southampton
-  SCRPTM Tax Map Base

Subject parcel resides entirely within the Central Pine Barrens Core Area, the Central Suffolk Special Groundwater Protection Area and Hydrogeologic Zone III (Article 6).



Locator



COPYRIGHT 2012, COUNTY OF SUFFOLK, N.Y.
Real Property Taxmap parcel linework used with permission of Suffolk County Real Property Tax Service Agency (R.P.T.S.A.). This rendering is a DRAFT MAP in that 1) the data displayed is an interagency or intra agency work* produced for the purpose of identifying and correcting data. It is not a final agency determination. It is not statistical or factual compilation of data. In some cases correct data has been left out and questionable or inaccurate data has been exaggerated to help identify errors. In short, this is a DRAFT MAP produced in an effort to aid in the correction of data and is not held out as being complete or accurate in any way.

*excerpted from (F.O.I.L.) the provisions of the Freedom of Information Law [Public Officers Law Article 6 Section 84-90] by section 87.2.g